

PROJECT NAME: WEST LAFAYETTE HIGH SCHOOL CHILLER REPLACEMENT
ADDENDUM NO. 1
PROJECT NO. 2026-008.WLC
DATE: 5/11/2026

This Addendum consists of one (1) Addendum page and four (4) attachment pages totaling five (5) pages. This Addendum shall supplement, amend, and become part of the Bid Documents. All Bids shall be based on these modifications. Bidders shall acknowledge the receipt of this addendum on their Bid Form.

GENERAL – NOT APPLICABLE

SPECIFICATIONS

ITEM NO. 1 Specification Section 232123 HYDRONIC PUMPS

- A. Add subparagraph 2.2.A.4 to read as follows to add Armstrong as an approved manufacturer.

“4. Armstrong.”

DRAWINGS

M-601 - MECHANICAL SCHEDULES AND DETAILS - Delete and Replace in its entirety.

M-701 - TEMPERATURE CONTROLS SCHEMATICS - Delete and Replace in its entirety.

M-702 - TEMPERATURE CONTROLS SCHEMATICS - Delete and Replace in its entirety.

MD101 - MECHANICAL DEMOLITION FIRST FLOOR PLAN - Delete and Replace in its entirety.

ATTACHMENTS

M-601

M-701

M-702

MD101

END OF ADDENDUM NO. 1

WATER COOLED CHILLER SCHEDULE -																																	
IDENTITY DATA			MAX. UNIT DIMENSIONS			PERFORMANCE			EVAPORATOR DATA							CONDENSER WATER DATA				COMPRESSOR DATA				REFRIGERANT DATA		SOUND LEVELS		ELECTRICAL DATA				NOTES	
MARK	MANUFACTURER	MODEL	L	W	H	WEIGHT (LBS)	EFFECTIVE (TONS)	NPLV (KW/TON)	FLOW (GPM)	MIN. FLOW (GPM)	EWT / LWT (°F)	WPD (FT-WG)	FLUID TYPE	# OF PASSES	FOULING FACTOR	FLOW (GPM)	EWT / LWT (°F)	WPD (FT-WG)	# OF PASSES	FLUID TYPE	TYPE	QTY	KW EACH	# OF CIRCUITS	VFD	TYPE	CHARGE (LB)	POWER/PRESS. (DBA)	VOLTS / PH / HZ	UNIT POWER (KW)	MCA (A)		MOC (A)
CH-2	TRANE	CVHF 485	201"	109"	103.6"	24,456	500	0.3984	965	688	54 / 42	15.9	20% PG	2	0.0001	1,500	85 / 94.8	11.8	2	WATER	CENT	1	368.5	1	YES	R-514A	1000	80	460 / 3 / 60	368.5	617	1000	1-5

- WATER COOLED CHILLER SCHEDULE NOTES:**
- MANUFACTURER-PROVIDED OVERLOAD PROTECTION DISCONNECT.
 - SINGLE POINT POWER.
 - HIGH-FAULT 65 KA SCCR.
 - STARTER TYPE: INTEGRAL VFD.
 - SEE M-700 SERIES DRAWINGS FOR TEMPERATURE CONTROLS INFORMATION.

PUMP SCHEDULE - 23 21 23																		
IDENTITY DATA							WEIGHT (LBS)	TYPE	FLUID DATA				MOTOR DATA		ELECTRICAL DATA		NOTES	
MARK	MANUFACTURER	SERIES	MODEL	FRAME	IMPELLER SIZE (IN)	SYSTEM SERVED			FLUID TYPE	FLOW (GPM)	HEAD (FT-WG)	TEMP (°F)	EFF (%)	SPEED (RPM)	HP	BHP		VOLTS / PH / HZ
P-7	BELL & GOSSET	e1510	6G	326JM	13.5"	CW	1,260	CLOSED COUPLED IN-LINE CENTRIFUGAL	WATER	1,500	107.0	90	78.1	1,800	50.0	48.2	480 / 3 / 60	1-2
P-8	BELL & GOSSET	e1510	6G	326JM	13.5"	CW	1,260	CLOSED COUPLED IN-LINE CENTRIFUGAL	WATER	1,500	107.0	90	78.1	1,800	50.0	48.2	480 / 3 / 60	1-2

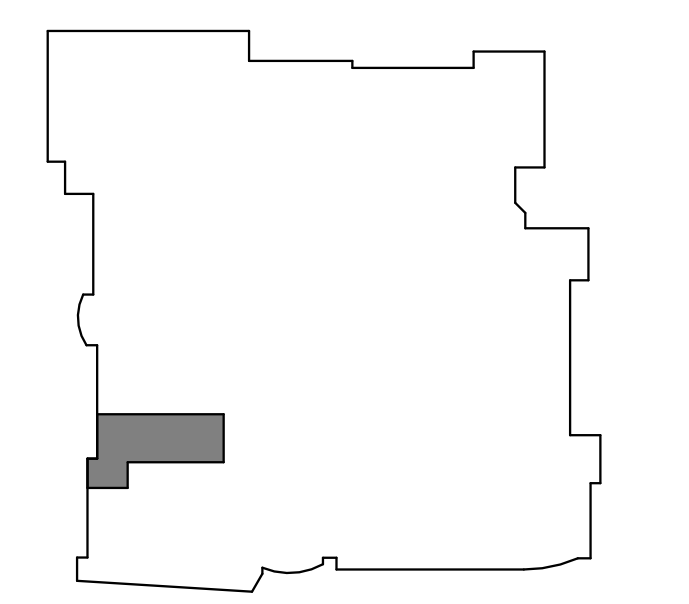
- PUMP SCHEDULE NOTES:**
- PROVIDE WITH ACCESSORIES SHOWN IN DETAILS.
 - PROVIDE FULL SIZE IMPELLER. LIMIT OVERLOAD WITH VFD.



WEST LAFAYETTE HS CHILLER REPLACEMENT
WEST LAFAYETTE COMMUNITY SCHOOL CORPORATION
 1105 GRANT ST.
 WEST LAFAYETTE, IN 47906



©COPYRIGHT
 THESE DRAWINGS ARE THE PROPERTY OF
 CREATIVE ENGINEERING SOLUTIONS AND ARE
 NOT TO BE ON ANY OTHER PROJECT. DRAWINGS
 SHALL BE RETURNED UPON REQUEST. NOT VALID
 UNLESS SIGNED AND SEALED.



KEY PLAN

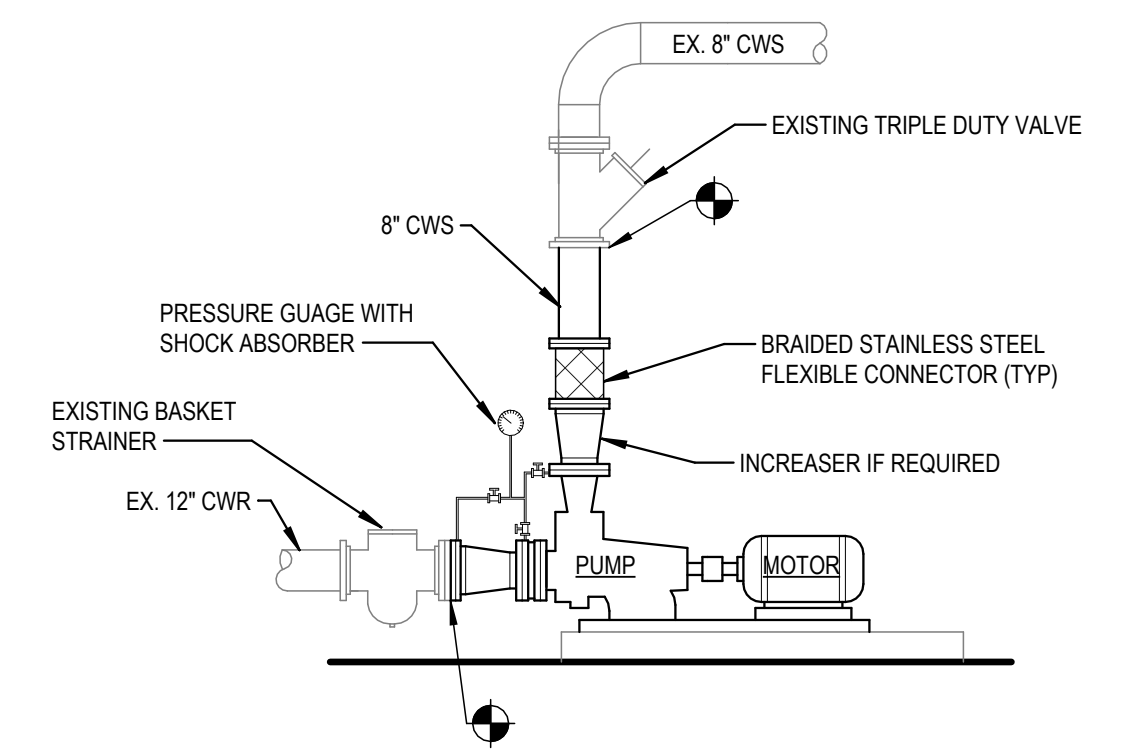
#	REVISION	DATE
1	ADD #1	05/11/2026

JOB NO. 2026-008.WLC
 PRODUCED AM / GC
 DATE 04/20/2026

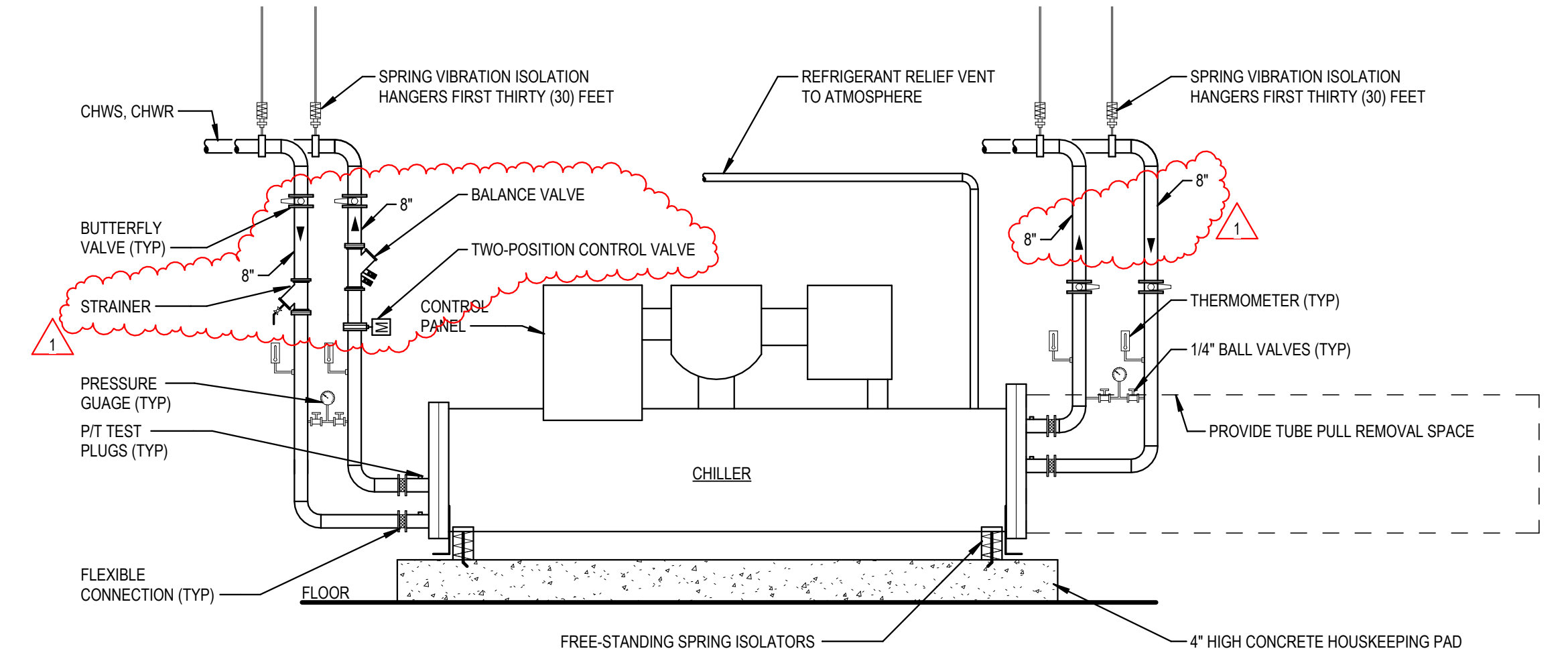
MECHANICAL SCHEDULES AND DETAILS

M-601

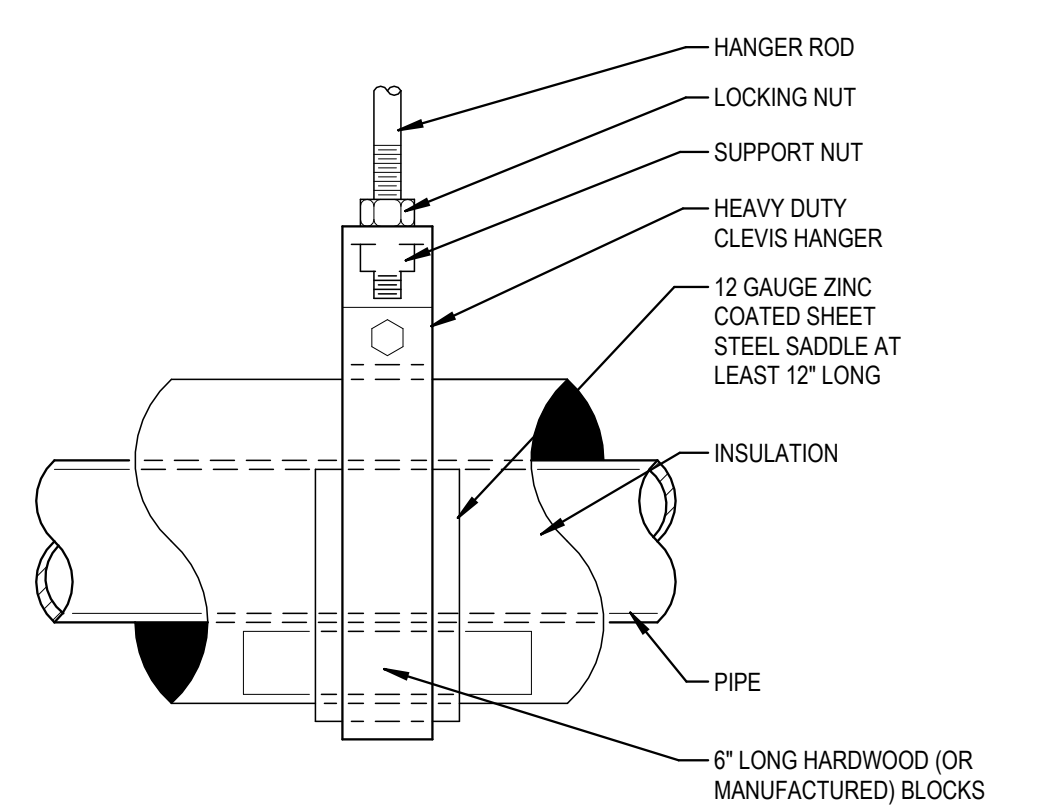
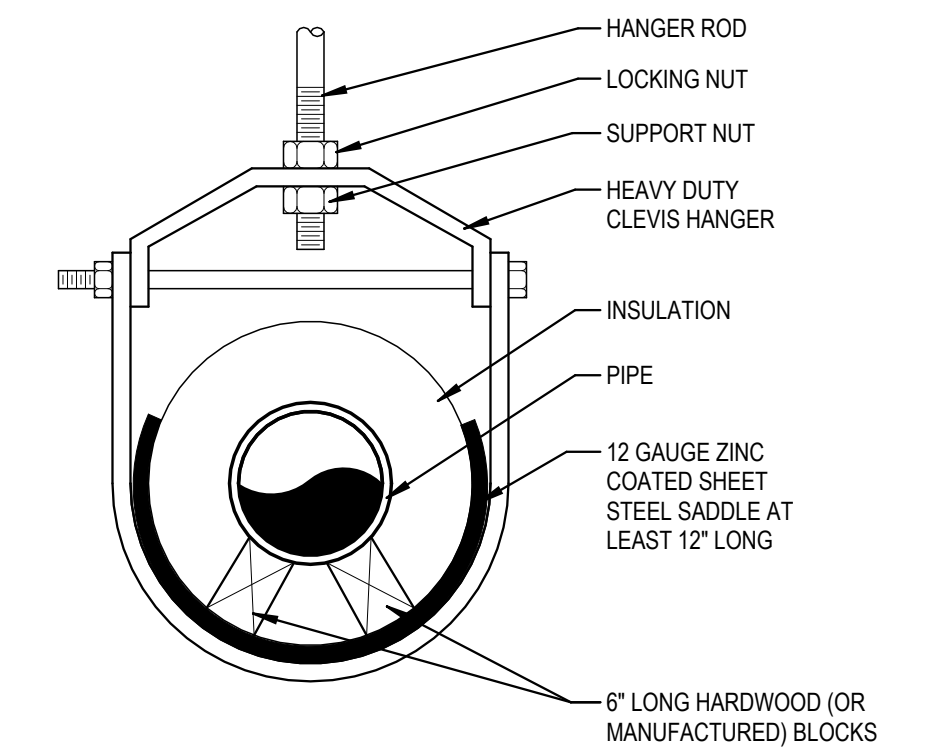
- NOTES:**
- PUMPS SHALL BE SUPPLIED WITH UNIONS ON SUCTION AND DISCHARGE IF NOT FLANGED.
 - PRESSURE GAUGE SHALL BE LIKE TRERICE 700 LFB, 2 1/2" CASE, SILICONE FILL WITH IMPULSE DAMPENER.
 - SEE PUMP SCHEDULE FOR PUMP TYPE AND MODEL NUMBERS.
 - VALVES AND STRAINER TO BE FULL PIPE SIZE.



1 BASE MOUNTED END SUCTION PUMP PIPING DETAIL
 NOT TO SCALE



2 CHILLER PIPING DETAIL
 NOT TO SCALE



3 PIPE HANGER (8" AND LARGER) DETAIL
 NOT TO SCALE

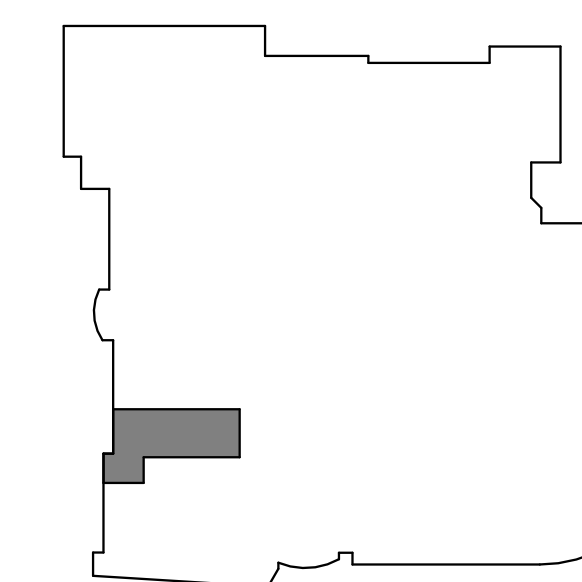
100% MECHANICAL, ELECTRICAL AND PLUMBING
 DESIGN FOR WEST LAFAYETTE COMMUNITY SCHOOLS CORPORATION, WEST LAFAYETTE, INDIANA
 05/11/2026 10:00 AM



WEST LAFAYETTE HS CHILLER REPLACEMENT
 WEST LAFAYETTE COMMUNITY SCHOOL CORPORATION
 1105 GRANT ST.
 WEST LAFAYETTE, IN 47906



@COPYRIGHT
 THESE DRAWINGS ARE THE PROPERTY OF
 CREATIVE ENGINEERING SOLUTIONS AND ARE
 NOT TO BE ON ANY OTHER PROJECT. DRAWINGS
 SHALL BE RETURNED UPON REQUEST. NOT VALID
 UNLESS SIGNED AND SEALED.



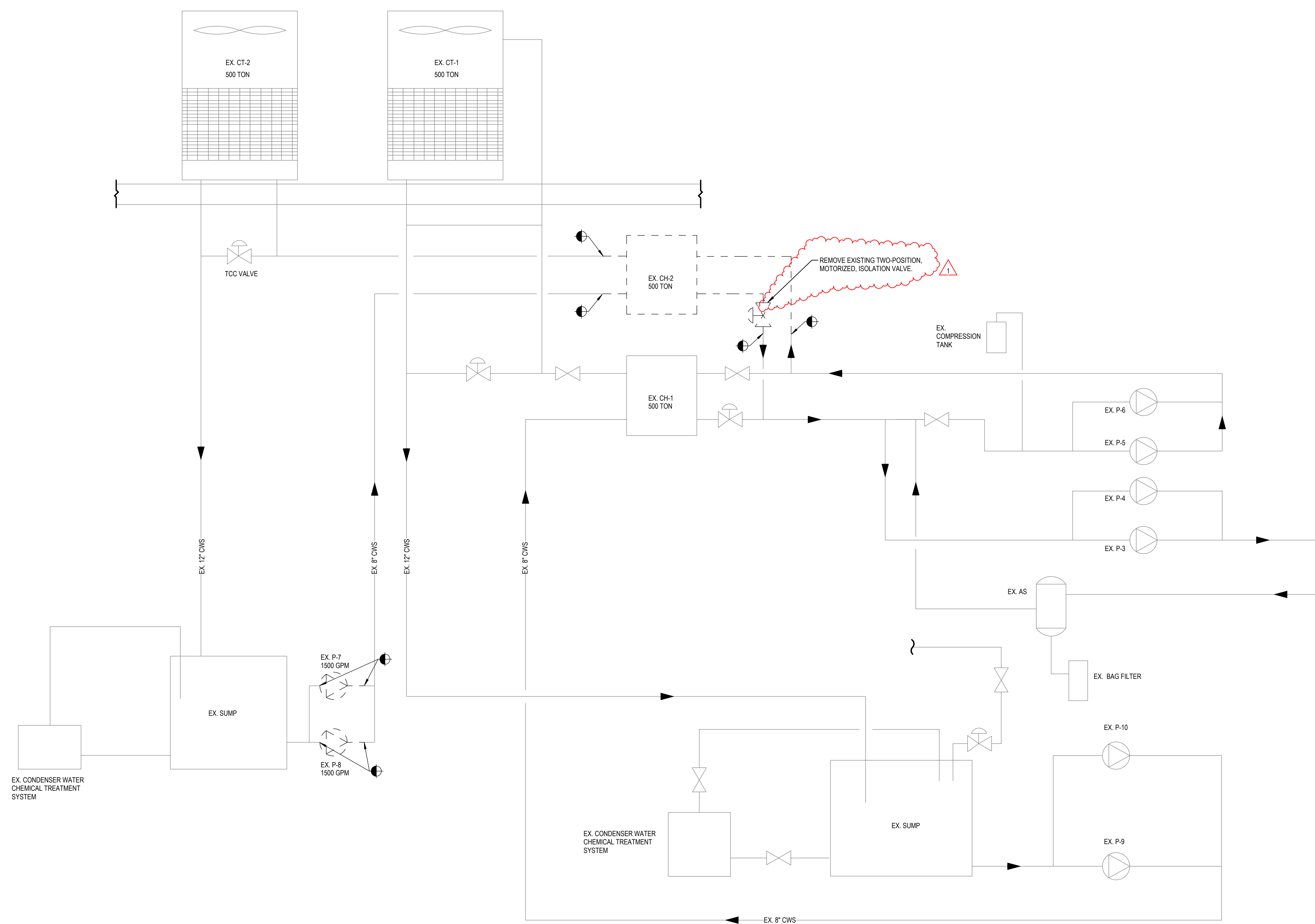
KEY PLAN

#	REVISION	DATE
1	ADD #1	05/11/2026

JOB NO. 2026-008.WLC
 PRODUCED AM / GC
 DATE 04/20/2026

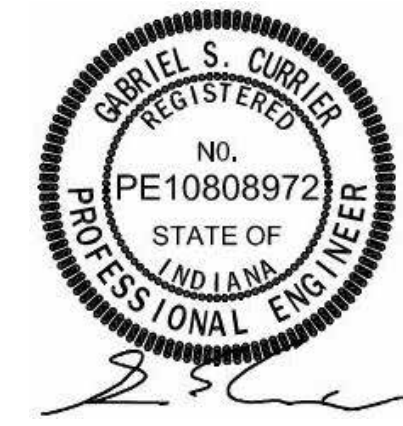
TEMPERATURE CONTROLS SCHEMATICS

M-701



1 WATER SYSTEM PIPING DIAGRAM
 NOT TO SCALE

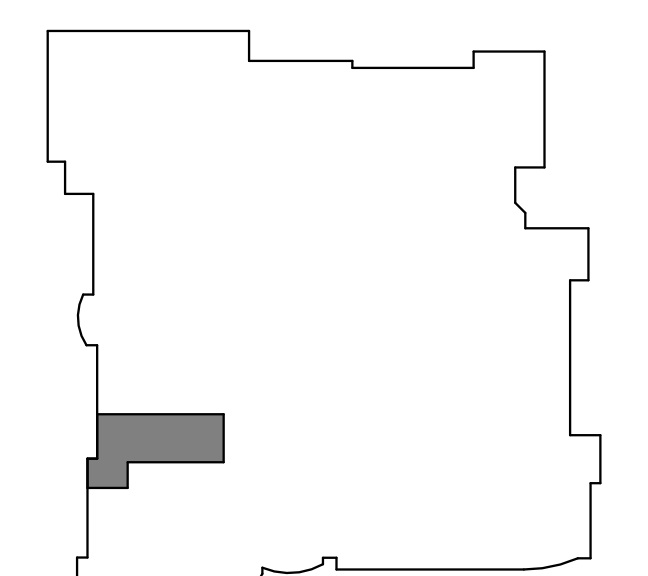
ALL INFORMATION CONTAINED HEREIN IS THE PROPERTY OF CREATIVE ENGINEERING SOLUTIONS. IT IS TO BE USED ONLY FOR THE PROJECT AND SITE SPECIFICALLY IDENTIFIED HEREIN. IT IS NOT TO BE REPRODUCED, COPIED, OR TRANSMITTED IN ANY FORM OR BY ANY MEANS, ELECTRONIC OR MECHANICAL, INCLUDING PHOTOCOPYING, RECORDING, OR BY ANY INFORMATION STORAGE AND RETRIEVAL SYSTEM.



WEST LAFAYETTE HS CHILLER REPLACEMENT
WEST LAFAYETTE COMMUNITY SCHOOL CORPORATION
 1105 GRANT ST.
 WEST LAFAYETTE, IN 47906



©COPYRIGHT
 THESE DRAWINGS ARE THE PROPERTY OF
 CREATIVE ENGINEERING SOLUTIONS AND ARE
 NOT TO BE ON ANY OTHER PROJECT. DRAWINGS
 SHALL BE RETURNED UPON REQUEST. NOT VALID
 UNLESS SIGNED AND SEALED.



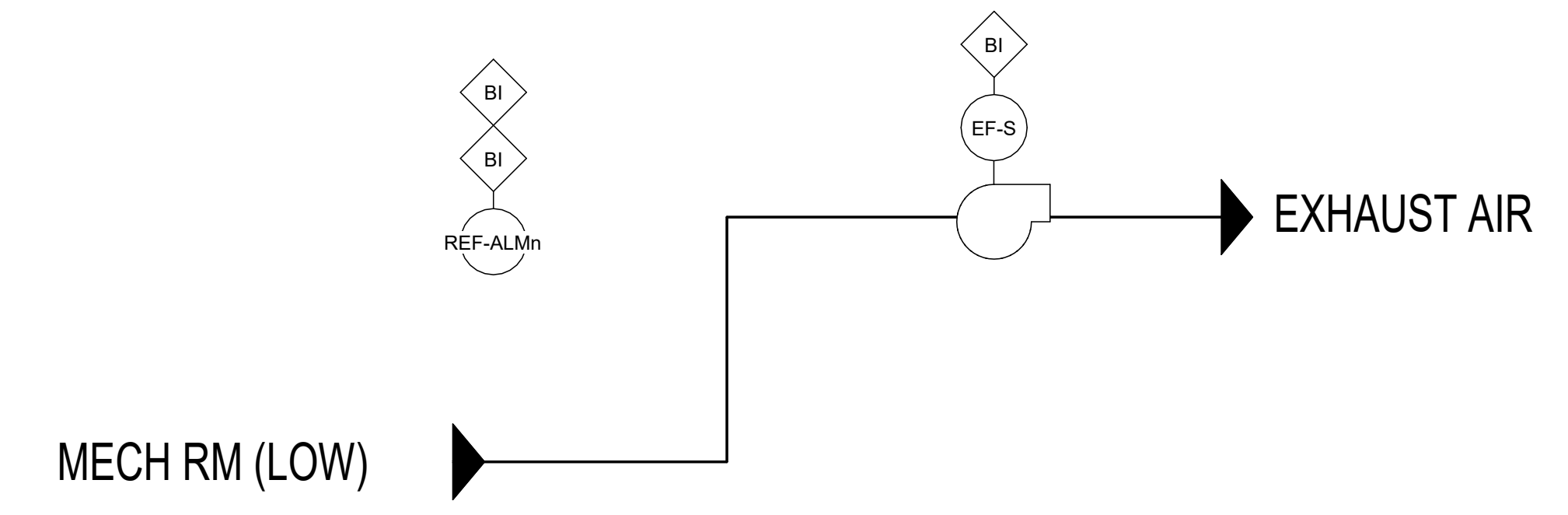
KEY PLAN

#	REVISION	DATE
1	ADD #1	05/11/2026

JOB NO. 2026-008.WLC
 PRODUCED AM / GC
 DATE 04/20/2026

TEMPERATURE CONTROLS SCHEMATICS

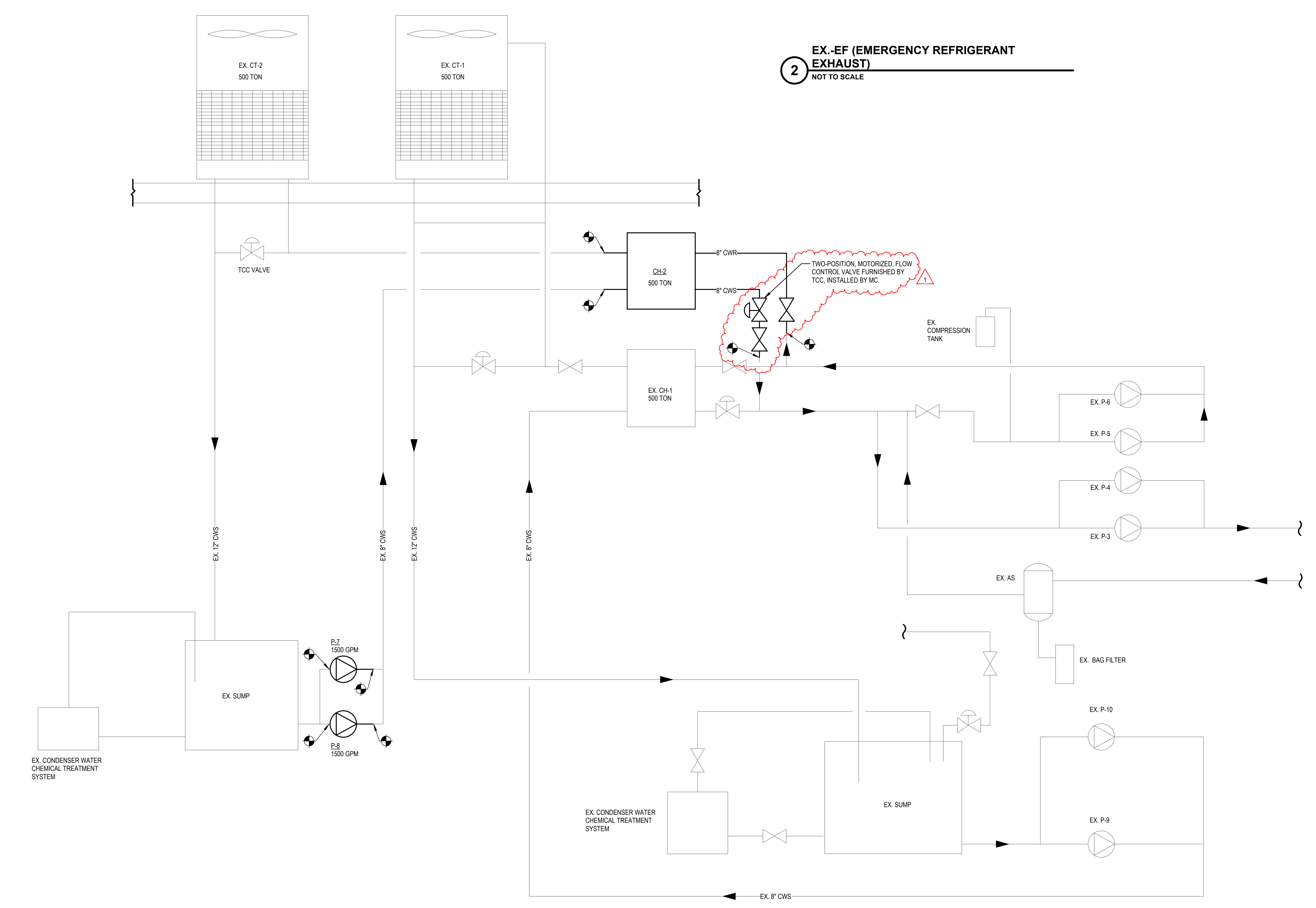
M-702



REFRIGERANT MONITORING: REFRIGERANT MONITORING AS DESCRIBED BELOW SHALL BE FURNISHED AND INSTALLED BY THE MC. PROVIDE A NEW SYSTEM TO SENSE R454B REFRIGERANT. ALL EQUIPMENT ASSOCIATED WITH A REFRIGERANT ALARM (START OR DISABLE) SHALL BE WIRED DIRECTLY FROM REFRIGERANT MONITORING SYSTEM TO THE CONTROLLED DEVICE AS CALLED OUT IN SEQUENCE. STATUS OF THE EXHAUST FAN AND BOTH ALARM LEVELS SHALL BE MONITORED BY THE BMS. AN ALARM (REF-ALM1) SHALL AUTOMATICALLY ILLUMINATE A STROBE LIGHT INSIDE THE EQUIPMENT ROOM TO ALERT THE BUILDING PERSONNEL. THE RELAY SHALL REMAIN "LATCHED" UNTIL MANUALLY RESET. IF SIGNAL ALSO AUTOMATICALLY STARTS THE MECHANICAL SPACE VENTILATION BY ACTIVATING AN EXISTING EXHAUST FAN (DIRECT-WIRED, NO BMS INTERFACE OTHER THAN STATUS). CONNECT SIGNAL FROM REFRIGERANT MONITOR TO EXISTING CONTACTOR PANEL AND STARTER FOR EXISTING EXHAUST FAN. BMS SHALL NOTIFY THE APPROPRIATE MAINTENANCE PERSONNEL THAT A LEVEL 1 ALARM HAS OCCURRED (E- WARNING - REFRIGERANT MONITOR ALARM, OUTDOOR AIR IS NOW BEING DRAWN INTO THE EQUIPMENT ROOM). WITH THE EXCEPTION OF A 15 MINUTE MECHANICAL CIRCUIT INTERRUPTION TIMER FOR THE EQUIPMENT ROOM HORN AND EXTERNAL AUDIBLE INDICATORS, ALL ALARM STATUS AND AUTOMATIC ACTIONS SHALL BE MAINTAINED AND ALARM RESET SHALL BE INHIBITED UNTIL THE REFRIGERANT LEVELS ARE BELOW THE APPROPRIATE CONCENTRATION LEVELS. ALARM ACTIONS SHALL RETURN TO NORMAL OPERATION WHEN THE REFRIGERANT CONCENTRATION DROPS BELOW PRESET LEVELS. THE BMS SHALL INDICATE A RETURN TO NORMAL OPERATION MESSAGE. THE MONITORING UNIT SHALL INDICATE LOCALLY A UNIT MALFUNCTION AND AIRFLOW LOSS ALARMS. ENABLING OF THE EXHAUST FAN SHALL BE DIRECTLY WIRED TO REFRIGERANT MONITORING SYSTEM. ACCEPTABLE REFRIGERANT MONITORS ARE CHILLGARD, HALOGUARD AND TRANE.

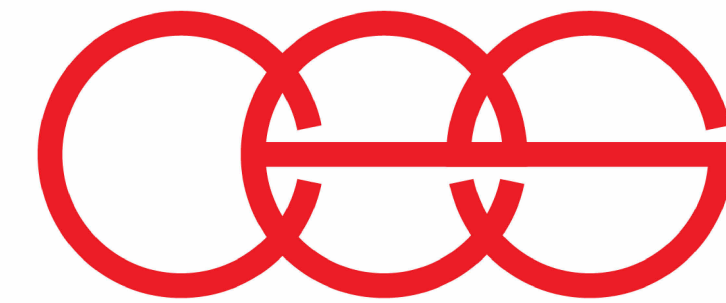
NOTE: THE EXISTING BUILDING AUTOMATION SYSTEM IS ANDOVER CONTROLS. THE EXISTING BAS SHALL BE RENOVATED AND UPGRADED BY HAVEL TO RECONNECT TO AND CONTROL THE NEW CHILLER AND PUMPS. ALL EXISTING SENSORS ADJACENT TO THE REPLACED EQUIPMENT SHALL BE REPLACED. THE EXISTING SEQUENCES OF OPERATION SHALL BE MAINTAINED. TCC SHALL REFERENCE THE FLOOR PLANS AND PIPING DIAGRAM THIS SHEET FOR EQUIPMENT AND CONTROLS THAT SHALL BE REPLACED. ALL SENSORS THAT ARE REMOVED BY THE INDICATED PIPING DEMOLITION SCOPE SHALL BE REPLACED AND REINSTALLED IN THE NEW PIPING. TCC SHALL UPDATE ALL PROGRAMMING AND GRAPHICS FOR A COMPLETE AND FUNCTIONING SYSTEM AT PROJECT COMPLETION. VFD FURNISHED BY TCC AND INSTALLED BY DIV 26. PUMP SPEED SHALL BE DETERMINED AT TIME OF SYSTEM BALANCING. THE VFD FOR EACH PUMP SHALL BE SET AT A FIXED SPEED TO ACHIEVE THE DESIGN FLOW RATE.

2 EX-EF (EMERGENCY REFRIGERANT EXHAUST)
 NOT TO SCALE

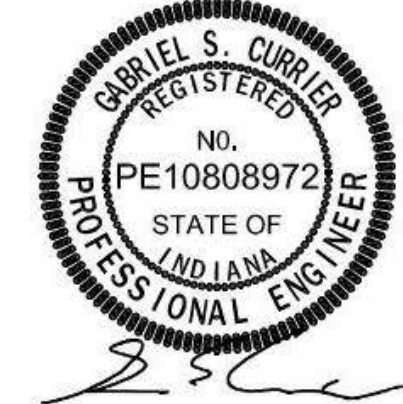


1 NEW WATER SYSTEM PIPING DIAGRAM
 NOT TO SCALE

ALL INFORMATION CONTAINED HEREIN IS THE PROPERTY OF CREATIVE ENGINEERING SOLUTIONS. IT IS TO BE USED ONLY FOR THE PROJECT AND SITE SPECIFICALLY IDENTIFIED HEREIN. IT IS NOT TO BE REPRODUCED, COPIED, OR TRANSMITTED IN ANY FORM OR BY ANY MEANS, ELECTRONIC OR MECHANICAL, INCLUDING PHOTOCOPYING, RECORDING, OR BY ANY INFORMATION STORAGE AND RETRIEVAL SYSTEM.



creative engineering solutions
 mechanical • electrical • plumbing
 602 N. Capitol Ave., Suite 200
 Indianapolis, IN 46204 • 463-233-9799
 www.creativeng.net

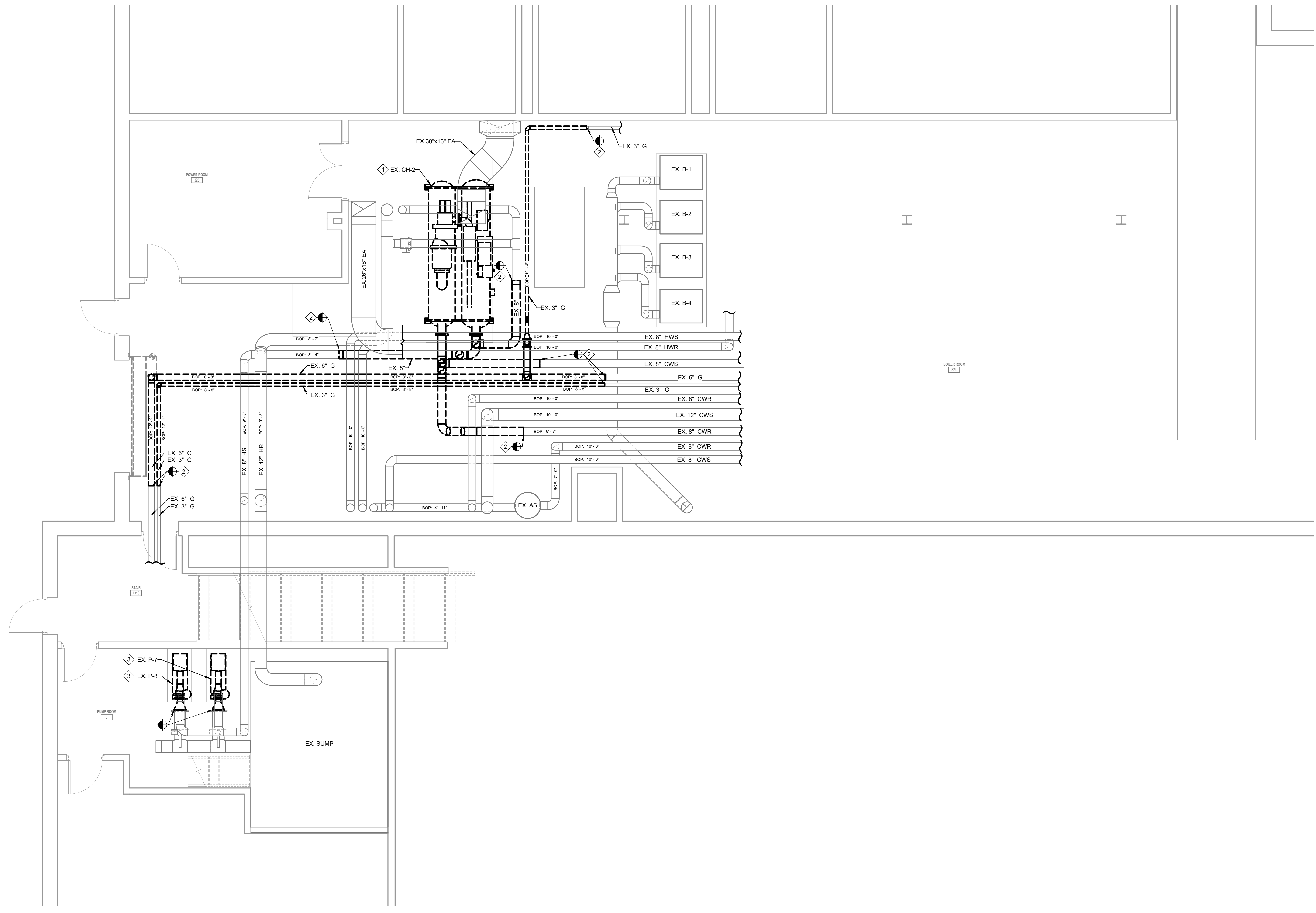


GENERAL DEMOLITION NOTES

- A DARK DASHED LINES INDICATE EXISTING MECHANICAL EQUIPMENT, DUCTWORK, PIPING, AND/OR MECHANICAL ACCESSORIES DEMOLISHED COMPLETE. CONTRACTOR TO FIELD VERIFY ACTUAL EXISTING CONDITIONS PRIOR TO BIDDING AND DEMOLITION. CONTRACTOR TO INCLUDE ALL COST TO REMOVE ITEMS MADE OBSOLETE DUE TO NEW HVAC WORK.
- B LIGHT SOLID LINES INDICATE EXISTING MECHANICAL EQUIPMENT, DUCTWORK, PIPING, AND/OR MECHANICAL ACCESSORIES TO REMAIN AS-IS. CONTRACTOR TO FIELD VERIFY ACTUAL EXISTING CONDITIONS PRIOR TO DEMOLITION AND BIDDING.

DEMOLITION HVAC PLAN NOTES

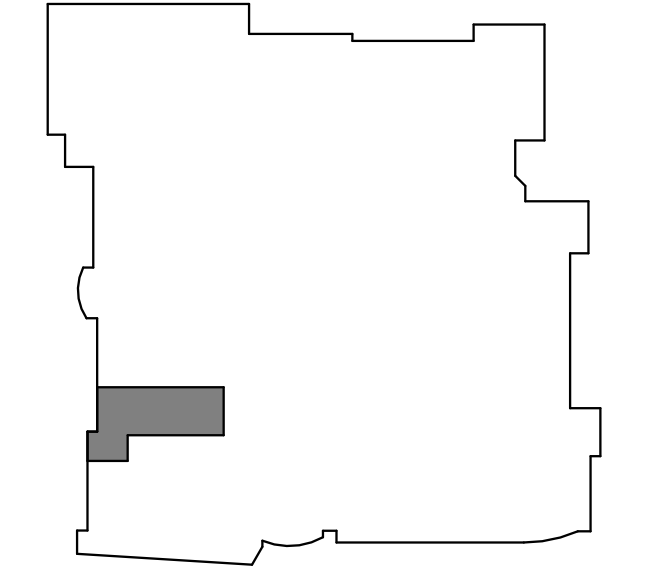
- 1 REMOVE CHILLER COMPLETE.
- 2 REMOVE PORTION OF PIPE TO POINT INDICATED. REMOVE TWO-POSITION MOTORIZED FLOW CONTROL VALVE ASSOCIATED WITH CH-2. PREPARE PIPING FOR INSTALLATION OF NEW.
- 3 REMOVE PUMPS AND PORTION OF PIPES TO POINT INDICATED FOR INSTALLATION OF NEW PUMPS.



WEST LAFAYETTE HS CHILLER REPLACEMENT
 WEST LAFAYETTE COMMUNITY SCHOOL CORPORATION
 1105 GRANT ST.
 WEST LAFAYETTE, IN 47906



@COPYRIGHT
 THESE DRAWINGS ARE THE PROPERTY OF CREATIVE ENGINEERING SOLUTIONS AND ARE NOT TO BE ON ANY OTHER PROJECT. DRAWINGS SHALL BE RETURNED UPON REQUEST. NOT VALID UNLESS SIGNED AND SEALED.



KEY PLAN

#	REVISION	DATE
1	ADD #1	05/11/2026

JOB NO. 2026-008.WLCC
 PRODUCED AM / GC
 DATE 04/20/2026

1 MECHANICAL DEMOLITION FIRST FLOOR PLAN
 1/4" = 1'-0"

MECHANICAL DEMOLITION FIRST FLOOR PLAN

MD101

WEST LAFAYETTE COMMUNITY SCHOOL CORPORATION
 1105 GRANT STREET, WEST LAFAYETTE, INDIANA 47906
 463-233-9799
 WWW.WLCCSCHOOLCORP.COM