



West Lafayette Intermediate School Spotlight October 7, 2024

West Lafayette School Board Presentation



WLIS Demographics

- **Overall School Enrollment:** 535 current 4th, 5th, and 6th graders plus 4 Essential Skills Students
- **Overall Free/Reduced lunch:** 24.1% (based on 2023 data on IN GPS)
- **Overall Special Education:** 8.4%
 - 45 total special education students
 - 10 Speech and Language IEPs
 - 35 Students Access the Resource Room
 - 4 of these are in our Essential Skills class
- **Overall Number of Teachers:** 38
- **Overall Number of Support Staff:** 39 (custodial, kitchen, office, paraprofessionals, and lunchroom supervisors)

WLIS Highlights



Student created math games



Favorite Book Character



Reading for pleasure

WLIS Data Overview

At or Above Proficiency Data for WLIS and Indiana

WLIS ILEARN Math:

2022-2023 - 66.4%

2023-2024 - 70.1%

IN ILEARN MATH:

2022-2023 - 42.7%

2023-2024 - 42.3%

WLIS ILEARN ELA:

2022-2023 - 58.2%

2023-2024 - 63.6%

IN ILEARN ELA:

2022-2023 - 40.4%

2023-2024 - 41.1%

Data derived from IDOE Centralized Reporting System (secure site).

Goal #1

WLIS students will increase ILEARN Math proficiency from having 70% of students at or above proficiency to 75% of students at or above proficiency by 2027. This is an initial goal for the 3 year School Improvement Plan.



Goal #2

WLIS students will increase ILEARN ELA proficiency from having 64% of students at or above proficiency to 69% of students at or above proficiency by 2027. This is an initial goal for the 3 year School Improvement Plan.



Goal Strategies:

- Wonders (4th and 5th grades) and My Perspectives (6th grade) are new literacy textbook series aligned with the Science of Reading.
- ILEARN Checkpoints will be used by all grade levels as an early measure for standard mastery.
- Grade level teams aligned curriculum and standards to the ILEARN Checkpoints.
- Classroom and pull out intervention supports will be given to students not demonstrating mastery of ILEARN Checkpoint covered standards.
- Teachers provide differentiated instruction after gaining early data from the ILEARN Checkpoint assessments.
- Grade level teams are reviewing data, curriculum, and resources to support one another in effectively reaching a variety of learners.

Goal #3

Our teachers have been working well as a team to focus on aligning the curriculum with state standards according to the ILEARN Checkpoints. Teachers in special areas are also pulling standards that they can teach through their own content to support students' growth in our goals. We will also be focusing on data collected through the three ILEARN Checkpoints and how to use that to inform instructional decisions for our students' needs.



WLIS Spotlight

The collaboration among staff members is crucial in addressing the diverse needs of students. It's important to recognize and celebrate the efforts of all team members who contribute to creating a nurturing and supportive environment for students. I am grateful for our district prioritizing the staff in place to support students academically, socially, and emotionally.



September
LIBRARY CHALLENGE

Celebrate Culture!
Choose a book with a setting and characters from a different ethnicity than your own. Immerse yourself in Asian or Latino or Indian culture. Find a book set in Europe or the Middle East. What is life like in another part of the world or coming from a different culture? The book can take place in the US as long as the characters come from a diverse cultural background.

Read the book! Take the AR quiz. Complete the September response.

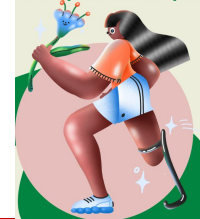
The poster features three panels at the top: a woman playing a pink guitar, a woman with a camera on a tripod, and a man with a laptop and a microphone. At the bottom, there are three panels: a woman in a headscarf, a person on a bicycle, and a woman on a phone next to a DJ mixer.

OCTOBER LIBRARY CHALLENGE

Understanding Differences!

We are all different. Some people live with a disability that makes life different--and often harder--than the rest of us. Read a book with a main character who has a disability. Learn about autism, deafness, blindness, dyslexia, being in a wheelchair, Tourette's syndrome, and many other differences by seeing through another person's eyes!

Read the book. Take the AR quiz.
Complete a response.



WLIS Spotlight

New this year...Cultural Night is an event designed to unite stakeholders by promoting understanding and appreciation of diverse backgrounds. Mark your calendars for this celebration of our cultural tapestry on January 24, 2025!

