

West Lafayette Community School Corporation



Special Education

School Board Presentation - August 14, 2023



Presentation Objectives



The following presentation provides current and historical information as well as data for the following:

1

Special Education
Staff

2

Special Education
Students

3

Decentralization
GLASS Programs

4

Special Education
Funding

Exciting news and what's next. . .

Special Education Program



Overview of WLCSC Building Programing

Elementary

Intermediate

Jr./Sr. High

Shelby Johnson - Director PK - 12

Tracy Holdman - Coordinator K - 6

Two Resource Room Programs

- Two Teachers
- Ten Paraprofessionals

One Essential Skills Program

- One Teacher
- Three Paraprofessionals

Two Resource Room Programs

- Two Teachers
- Eleven Paraprofessionals

Two Grades 7-9 Resource Room Programs

- Two Teachers

Two Grades 10-12 Resource Room Programs

- Two Teachers

Twelve Paraprofessionals

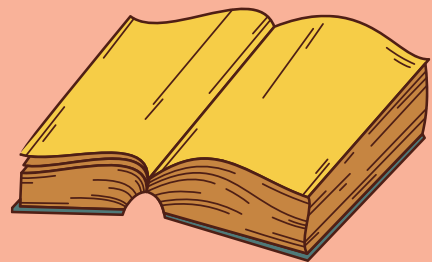
One Essential Skills Program

- One Teacher
- Four Paraprofessionals

Also supported by One Full Time and One Part-Time Special Education Secretaries

Impressive Years of Service

Research shows that almost 50% of Special Education Teachers leave the field within their first five years. - [A Million Paper Cuts, Why Special Education Teachers Leave the Profession](#)



Teachers

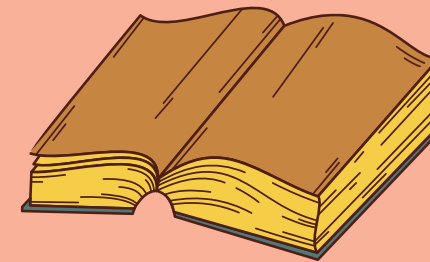
Years of Service

Total number of years
teaching

148.5

Total number of years
teaching Special Education

114.5



Paraprofessionals

Years of Service

Total number of
service years

138

Total Years in Special Education for Administrators

48



Special Education Students

Historical IDOE Data

Year	Special Education #	Special Education %
2019	227	9.42%
2020	243	10.14%
2021	218	9.41%
2022	236	9.96%
2023	257	10.62%

GLASS Decentralization

Here are some examples of themes that have been turned into specific ideas.

Phase 1
2018 - 2019



Local Directors, Medical and Special Education Homebound

Phase 2
2019 - 2020



Transportation and Therapeutic Crisis Intervention Training

Phase 3
2020 - 2021



Essential Skills Programs, ED-Structured Programs, ESY Whole and Individual, Mild Intervention Teachers

Phase 4
2021 - 2022



Essential Skills Nurses

Phase 5
TBD



Specialists * Decentralization was paused by Governing Board Vote

G.L.A.S.S. Programs & Services

- Specialists
- Speech & Language Pathologists
- Speech & Language Assistance
- Speech & Language Facilitators
- School Psychologists
- BCBA
- Diagnosticians
- Alternative Teachers
- Alternative Behavior Facilitators
- Augmentative & Alternative Communication
- Assistive Technology Facilitator
- Autism Consultants
- Behavior Consultants
- Blind / Low Vision Consultant
- Deaf / Hard of Hearing Consultant
- Deaf / Hard of Hearing Interpreters
- ELL Interpreter
- ES Itinerant Teachers - GOALS Program
- ES Behavior Facilitator
- Medicaid Facilitator
- Non -Pub Teacher of Record
- Non - Pub Interventionists
- Nurses Pre-School
- Occupational Therapists
- Occupational Therapist Assistants
- Occupational Therapist Facilitator
- Physical Therapists
- Physical Therapist Facilitator
- Preschool Teachers
- Preschool Paraprofessionals
- Preschool Facilitator
- Psychologist Facilitator
- Transition Coordinators
- Transition Job Coaches
- Transportation ISB/ISD
- Learning Center Teacher
- Learning Center Behavior Facilitators





Why do we still need

G.L.A.S.S

- Cost savings
- Specialized positions - Needs of students
- Difficult to fill positions (not competing)
- More services and programs to offer students
- Learning community
- We are the smallest district of the three
- Small districts that have seperated from LEA have struggled to provide appropriate services - end up joining again.

Special Education State Funding



Funding is based on Adjusted Pupil Count (APC) for Level of Disability

Level One Severe Disabilities

Multiple Disabilities
Orthopedic Impairment
Blind or Low Vision
Deaf or Hard of Hearing
Emotional Disability - Full Time
Severe Intellectual Disability
Deaf - Blind
Autism Spectrum Disorder
Traumatic Brain Injury

Level Two Mild / Moderate Disabilities

Emotional Disability - Part Time
Specific Learning Disability
Developmental Delay
Mild Intellectual Disability
Moderate Intellectual Disability
Other Health Impairment

Level Three Communication Disorders

Language or Speech Impairment

Special Education State Funding



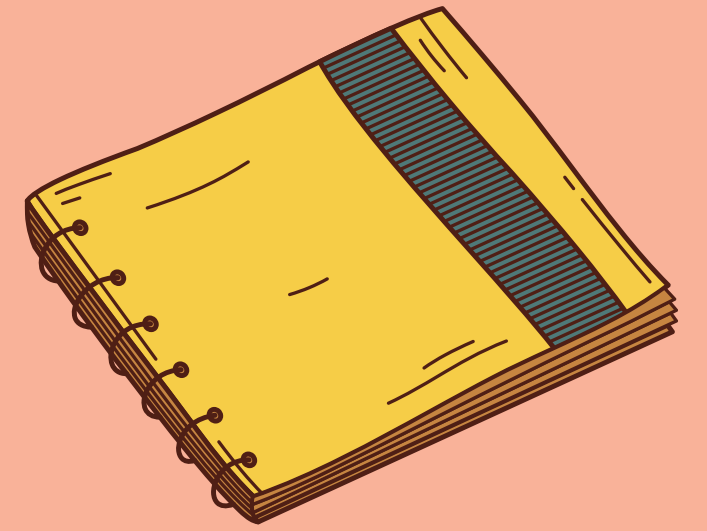
Year	APC Level One	APC Level Two	APC Level Three
2020 - 2021	\$9,156	\$2,300	\$500
2021 - 2022	\$9,614	\$2,415	\$500
2023 - 2024	\$10,575	\$2,657	\$500

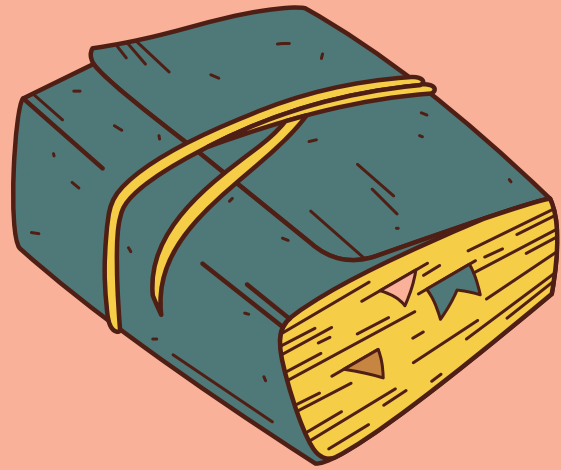
IU Center on Education and Lifelong Learning

Special Education Policy and Procedure Monitoring

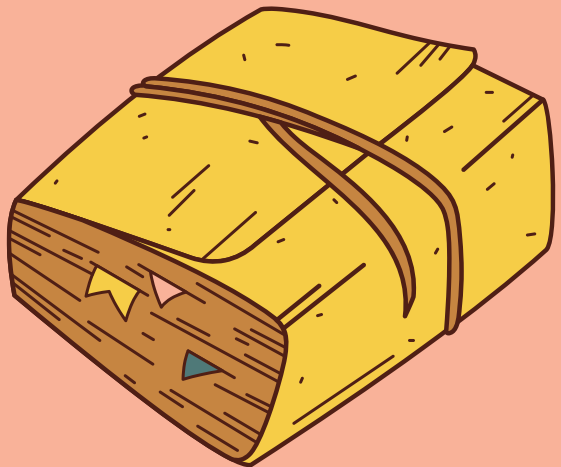
The following school corporations received the highest ratings:

- Carmel Clay Schools
- Center Grove Community School Corporation
- East Allen County Schools
- Hamilton Southeastern Schools
- Perry Township Schools
- Southwest Allen County Schools
- Vigo County School Corporation
- West Lafayette Community School Corporation





Exciting for 2023/2024



- New District-Wide Training Program for Paraprofessionals - The Master Teacher
- New and Improved Therapeutic Crisis Intervention Training (TSC / WLCSC)
- New Special Education Curriculum for the Elementary School
- New G.L.A.S.S. Director - Lissa Stranahan
- New Special Education Resource HUB for teachers

